

Stop IKSF 80

Applications

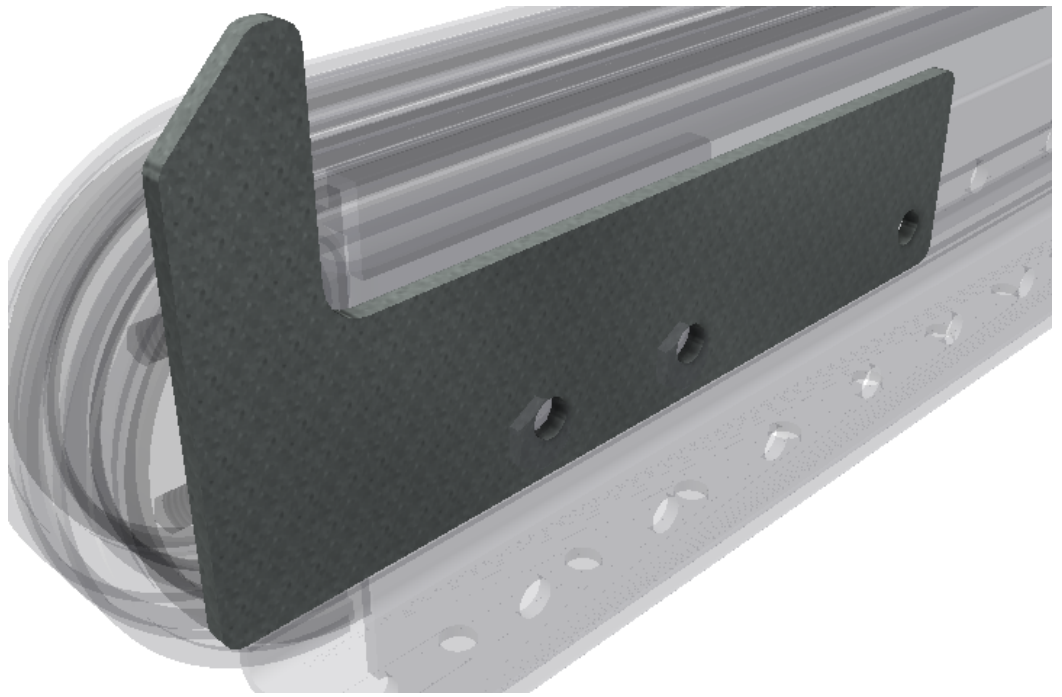
Stop Type IKSF 80 is intended for Chain conveyor Type IKDS 80. For: collection points, etc.

Description

Stop Type IKSF 80 is for fixed point positioning.

Order example

IKSF 80
Type

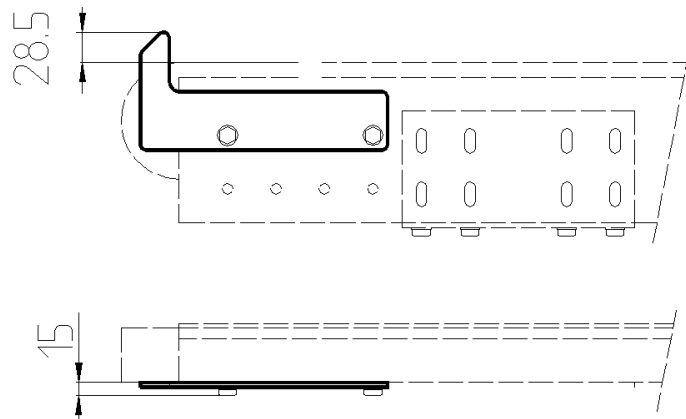


Specification

	Material/Type	Finish	Order separately
Bracket/Fixings	Steel	Zinc-plated	

Technical data

Type	Height H mm
IKSF 80 -	30



Tel: +46 431 44 91 00
info@intersystem.se
www.intersystem.se